

Shark Captain Product Manual

PRODUCT BROCHURES

NEW UPGRADE
NOT AFRAID OF WIND AND WAVES

Shark Sister Technology (Guangdong) Co., Ltd.

Workshop No. 2, No. 36, Sanling Road,
Hecheng Street, Gaoming District, Foshan City,
Guangdong Province, China
+8618823783320



公众号二维码 抖音号: 30347126530 视频号: 鲨鱼领航员

COMPANY INTRODUCTION

Shark Captain Technology, founded in 2020, has consistently specialized in the field of vessel intelligence and positioning, establishing itself as a leading enterprise in China's GPS electronic anchor system R&D and manufacturing. As the first innovative brand to achieve commercial application of high-power GPS trolling motor in the industry, the company has successfully developed a complete power matrix ranging from 1.3kw to 400kw through years of dedicated research, core technological breakthroughs, and rigorous testing. This system accommodates vessel specifications from 3 meters to 100 meters in length and tonnage requirements from 1 tons to 1000 tons, delivering precise and reliable positioning solutions for diverse aquatic environments. The Shark Captain trolling motor has gained significant popularity among Chinese anglers, boat owners, and distribution partners, while also achieving global market penetration.

To establish a comprehensive intelligent positioning ecosystem for vessels, Shark Captain has further developed complementary energy systems and smart devices. These include high-capacity specialized battery packs, trolling motor winches, and full-revolution thrusters. Through technological integration, the company continues to enhance user experiences across all operational scenarios.



- Spot Lock
- Spot Shift
- Automatic Lift
- Auto Drift
- Multi-Unit Linkage
- Heading Lock
- Waypoint Recording and Playback
- Side Thrust at Berth
- Spot Creep
- Manual Remote Control

Two year warranty, lifetime maintenance, on-site service, worry free after-sales service

High-strength corrosion-resistant materials: Designed for harsh marine environments, offering reliability and longevity.

Equipped automatic lifting system: One-button anchoring and retrieval, hands-free operation, effortless and convenient.

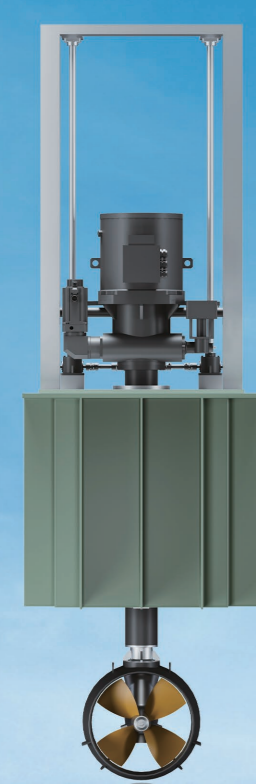
Advanced software features: Smart and versatile functionalities tailored for diverse sea fishing scenarios.

Brushless motors for lifting, steering, and propulsion: Exceptional longevity, high efficiency, and silent operation.

High-efficiency specialized propeller: Delivers robust thrust for superior performance.

GPS ANCHOR (TROLLING MOTOR)

Shark Captain GPS Anchor (Trolling Motor) Spec						
Product model	SS90	SS120	SS180	SS240	SS280	SS410
Rated Power (W)	1500	2500	3500	5500	7000	9500
Working Voltage-DC (V)	18.30	30.48	30.48	60.89	60.89	60.89
Rated Voltage-DC (V)	24	36	36	72	72	72
Rated Current (A)	63	70	97	76	97	132
Control Method	Wireless Remote Control + Emergency Button					
Positioning System	BeiDou / GPS / Galileo / GLONASS Quad-Constellation Multi-Frequency Positioning					
Motor Type	Brushless					
Motor Material	316L Stainless steel					
Propeller Material	Composite plastic	Composite plastic	2205 Stainless steel	2205 Stainless steel	2205 Stainless steel	2205 Stainless steel
Propeller Blade	2	2	2	3	3	3
Waterproof level Motor	IPX8					
Waterproof level Lift & Steering Box	IPX8					
Waterproof level Machine	IPX8					
Lifting Mode	Automatic Lifting					
Main Rod Diameter (mm)	32	32	38	45	50	50
Main Rod Length (m)	74 86	86 98	98 106 118	106 118 130	118 137 157	137 157 177
Main Rod Length (cm)	190 220	220 250	250 270 300	270 300 330	300 350 400	300 350 400
Main Rod Material	Carbon Fiber					
Net Weight (Kg)	25.30	30.35	30.35	45.50	80.100	80.110
Applicable Vessel Length (m)	8	10	12	14	15	18
Applicable Vessel Length (ft)	26	32	39	39	49	59
Applicable Vessel Weight (t)	3	4	7	10	14	18



Featuring advanced hydraulic or electric control systems, the rudder paddle rotates 360° in all directions, providing superior maneuverability and maneuverability.

Seamless hull integration for aesthetics and simplicity.

The propeller and fairing cowl are hydrodynamically optimized to ensure efficient propulsion, energy-saving and environmentally friendly.

Corrosion-resistant materials and modular design for easy maintenance.

Tailored to match vessel specifications.



Grade A Cells by Ruipu Lanjun: Cycle life ≥ 3,000 charges.

Marine-Optimized Design: Waterproof, shockproof, and fireproof.

Multiple software and hardware protection to ensure safety

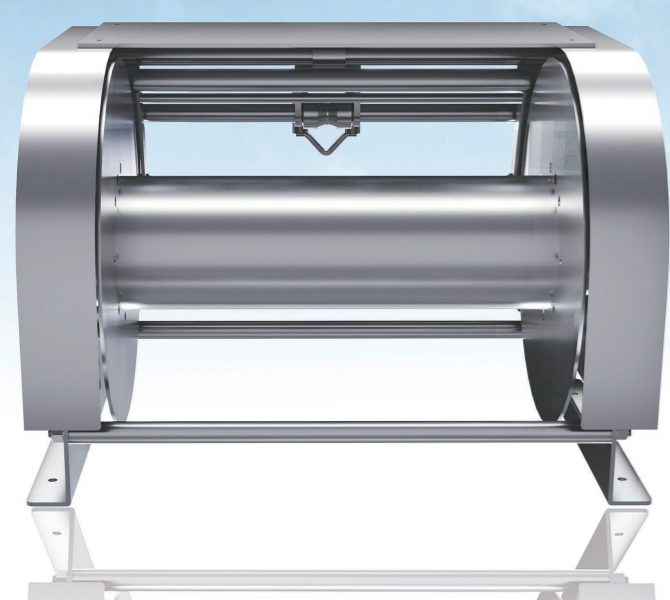
304 Stainless Steel Housing: Anti-corrosion and impact-resistant.

Shark Captain Full-Rotation Thruster F60

Module	Item	Specification
Overall Unit	Dimensions	3000mm×1040mm×960mm
	Weight	350kg
	Rated Power (Main Motor)	60kw
	Input Voltage	AC, 380V, 50Hz, Three-phase
	Main Motor Type	Permanent Magnet Motor
	Cooling Method	Water Cooling
	Protection Level	IP55
Thruster	Control Method	Wireless Remote Control + Button Control
	Positioning System	GPS, BeiDou, Galileo, GLONASS
	Blade Diameter	500mm
	Blade Rotation Speed	1000r/min
	Thrust	9000N
Lifting Mechanism	Number of Blades	4-Blade
	Lifting Motor Type	Servo Motor
	Rated Power	2.3kw
	Lifting Stroke	900mm
	Lifting Method	Electric Lift + Emergency Manual
Steering	Lifting Time	≤ 40s
	Steering Motor Type	Servo Motor
	Rated Power	2.3kw
	Steering Time (180° Rotation)	180 degrees/5s-8s
	Steering Method	Electric Rotation

Shark Captain GPS Anchor Special Battery (Marine Edition)

Specifications	24V 230AH	36V 150AH	36V 230AH	72V 150AH	72V 230AH	128V 205AH (Split)
Single Unit Dimensions	405*365*228mm	486*312*232mm	512*407*230mm	640*420*251mm	638*606*253mm	710*430*620mm
Single Unit Weight	48kg	49kg	67kg	95kg	127kg	108kg
Number of Cells	1	1	1	1	1	3 (2 batteries + 1 protection board)
Cell Connection Method	Series					
Cell Material	LiFePO4 (Lithium Iron Phosphate)					
Series/Parallel Configuration	8S1P	12S1P		23S1P	40S1P	
Nominal Voltage	25.6V	38.4V		73.6V	128V	
Charging Voltage	29.2V	43.8V		84V	146V	
Discharge Cut-off Voltage	22.4V	33.6V		64V	112V	
Maximum Continuous Discharge Current	0.65C					
Instantaneous Discharge Current	1.5C					
Charging Current	Standard: 0.5C, Maximum: 1C					
Operating Temperature	Charging: 0°C - 55°C, Discharging: -30°C - 55°C					
Casing Material	304 Stainless Steel + Powder Coating					
Protection Rating	IP65					
Compatible Apps (Bluetooth)	Xiaoxiang Electric					
Forced Start Function	Supported			Not Supported/Not Required		



Powerful performance, compact design for easy installation in the anchor locker, maintaining the hull's sleek appearance.

Ensures natural anchor descent with quick and precise deployment.

Constructed with marine-grade corrosion-resistant materials for durable reliability.

SHARK CAPTAIN

COMPANY INFORMATION

COMPANY NAME:
Shark Sister Technology (Guangdong) Co., Ltd.

ADDRESS:
Workshop No. 2, No. 36, Sanling Road,
Hecheng Street, Gaoming District, Foshan City,
Guangdong Province, China

WHATSAPP:
+86 188 1899 4672